



KLIMA- OG
FORURENSNINGS-
DIREKTORATET

Water Framework Directive (WFD)- History and Organisation

Jon Lasse Bratli, Climate and pollution agency

Seminar Iceland 27.april 2011

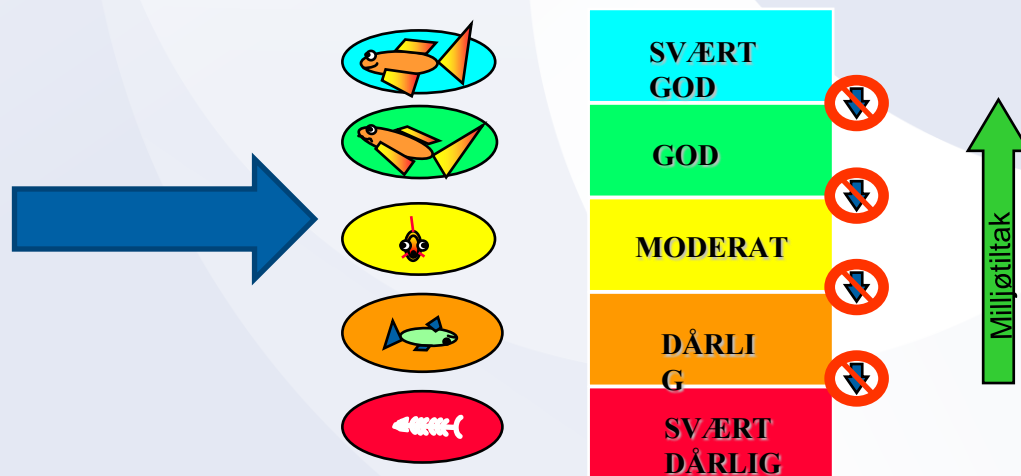
Water Framework Directive (WFD)

- Enhanced protection and improvement of inland water, groundwater and coastal waters

- Ecosystems approach -

objective of "good chemical and ecological status"

From effluent objectives to environmental objectives



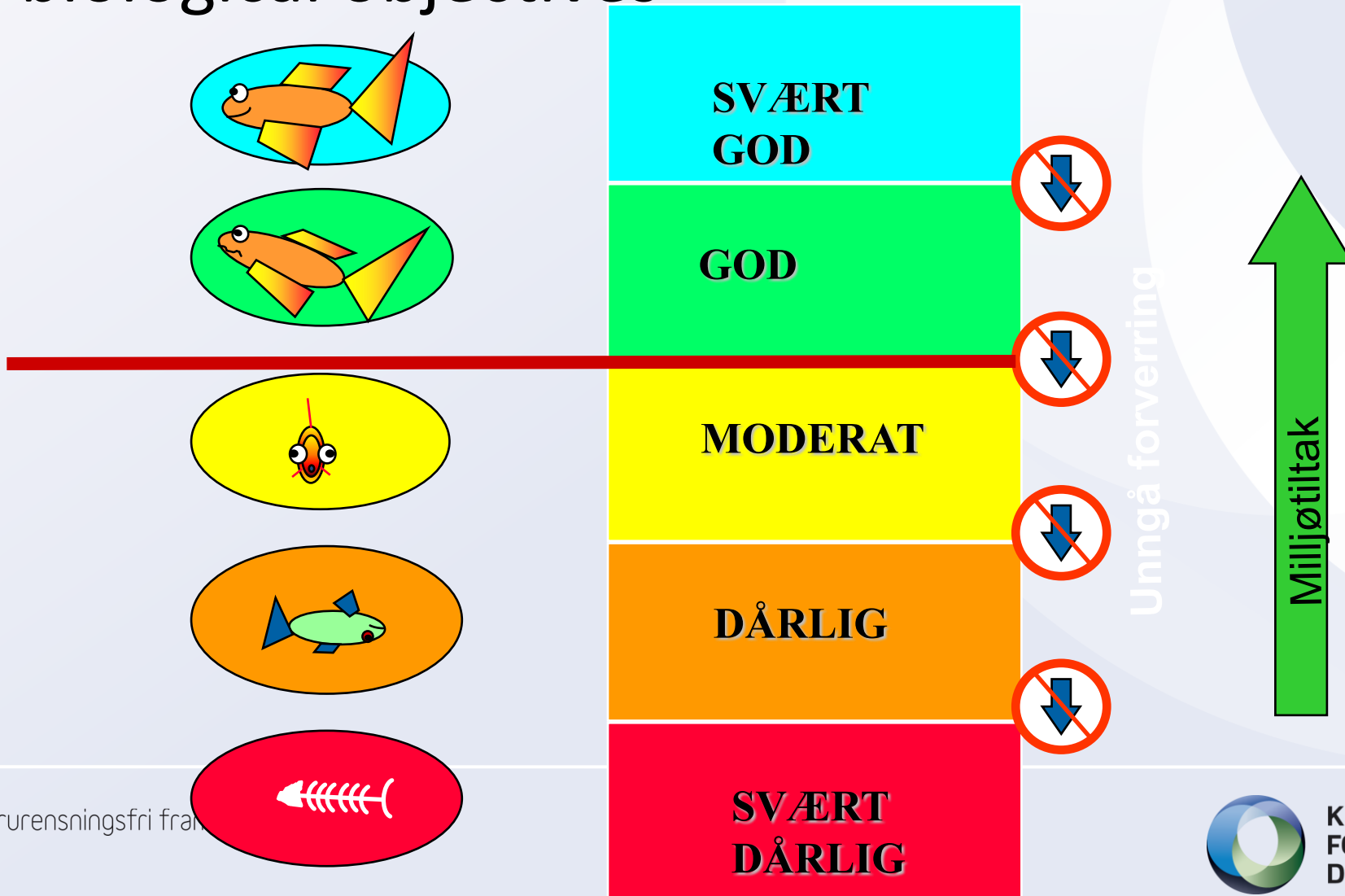
Forurensningsfri framtid

Foto: Marianne Gjorv



KLIMA- OG
FORURENSNINGS-
DIREKTORATET

Ecosystems approach: chemical and biological objectives



Forurensningsfri fram



KLIMA- OG
FORURENSNINGS-
DIREKTORATET

Water Framework Directive (WFD)

- **Integrated management**

- **River basin management (catchment areas)**

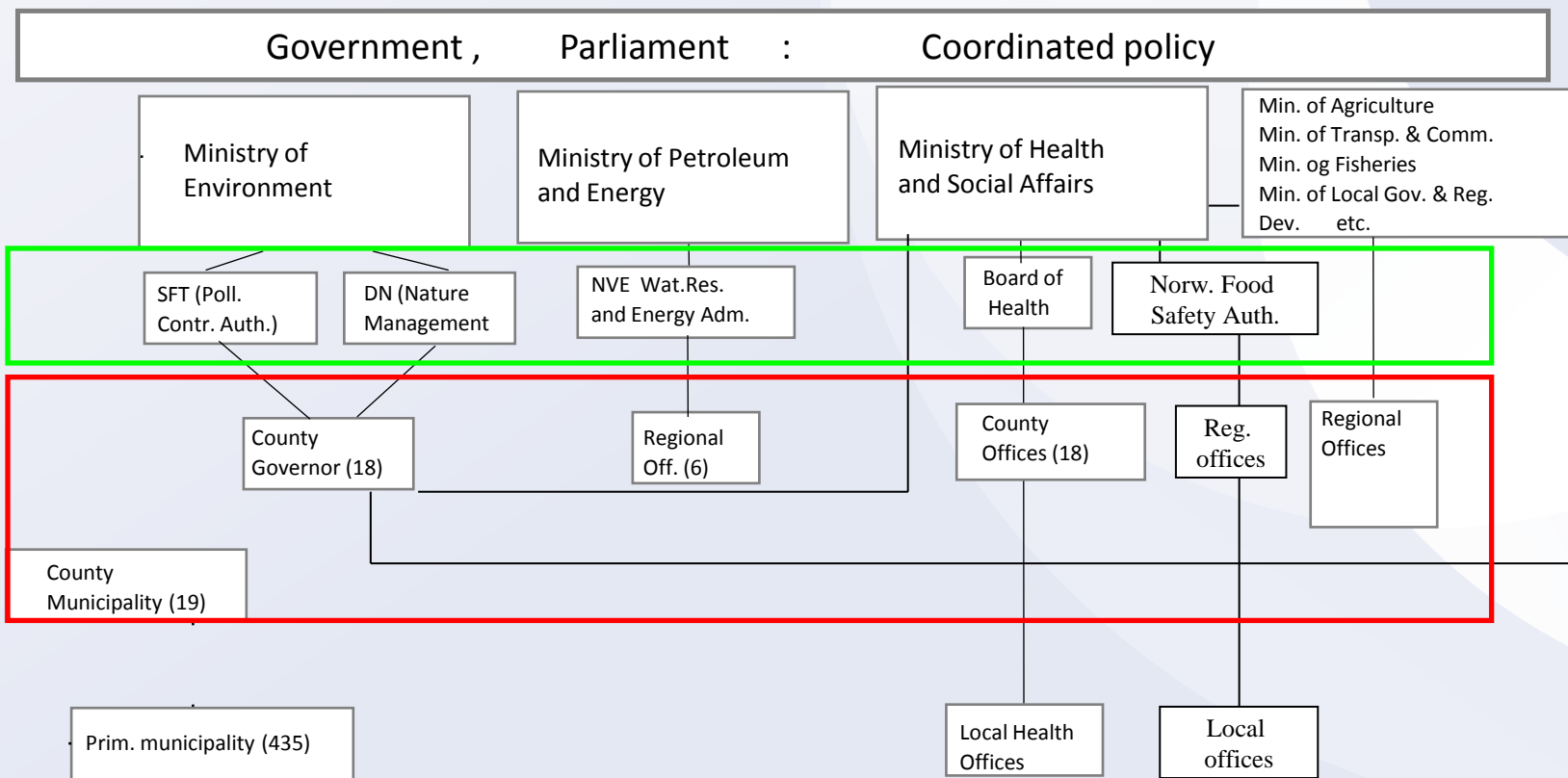
- **Inland water, groundwater and coastal waters**

- **Biological diversity + Pollution control + Water quantity**

What ? Does that mean the we have to work together ?



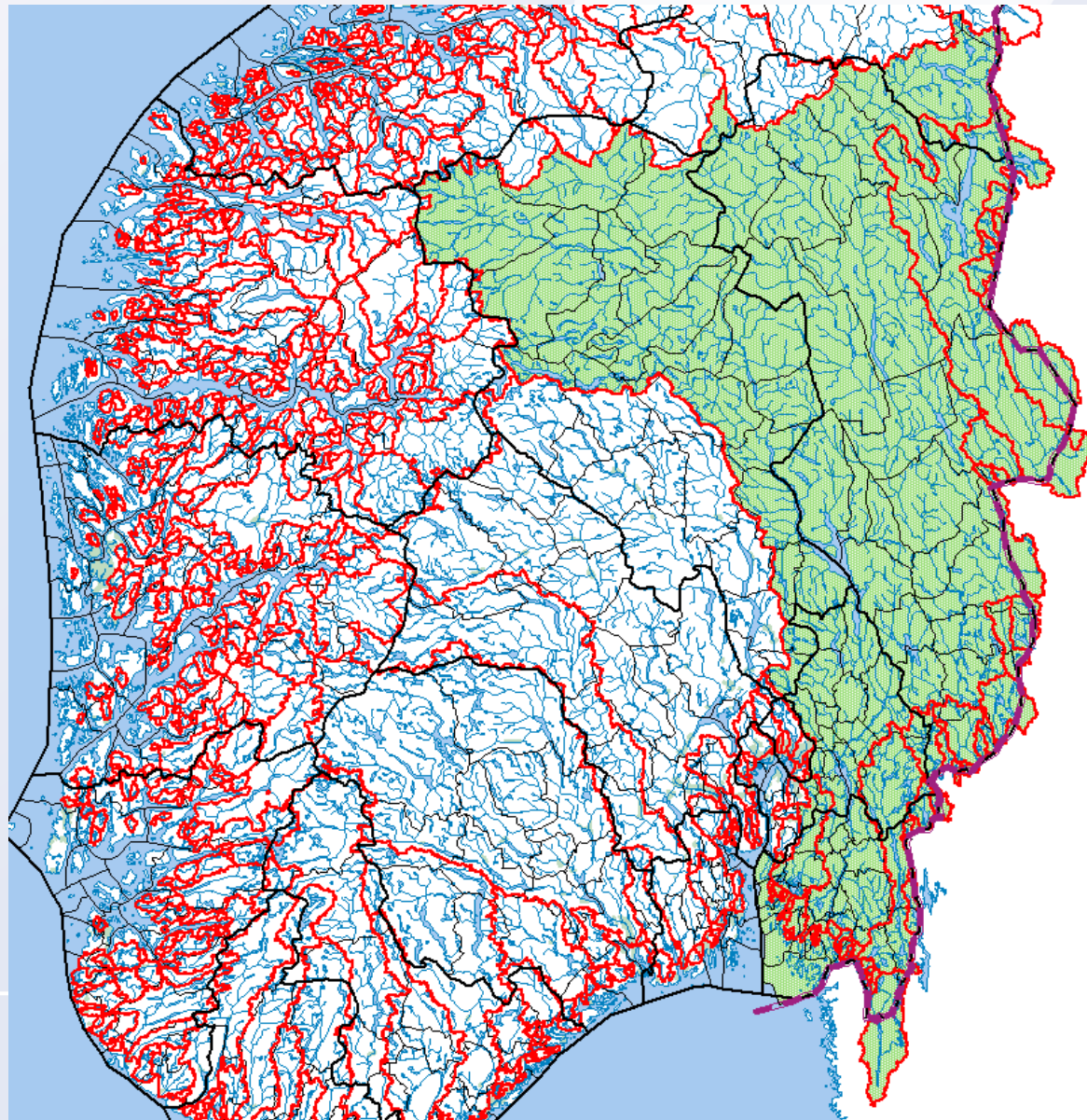
Water management - organisation



Municipal- and County planning : Coordination



River Basin Administrations – Glomma river basin districts



Green area:
Glomma River Basin District

Red lines:
River basins

Bold pink line:
Swedish border

Thick black lines:
Counties

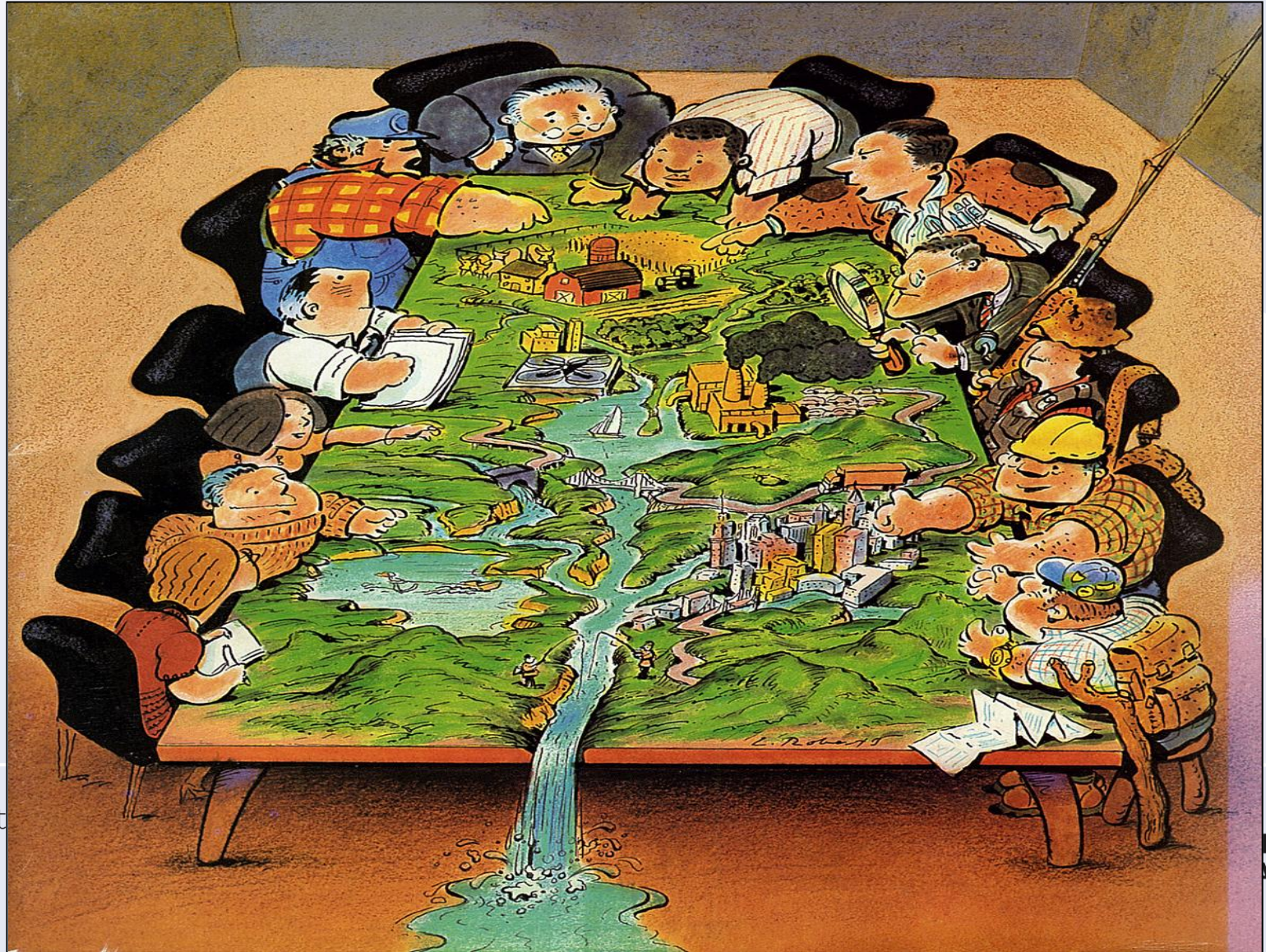
Thin black lines:
Municipalities

Water Framework Directive cont.

- **Programme of measures**
- **River basin management plans**



Make a common plan to reach common objectives!



Forurensningsfri framtid

NINGS-
ATET

History – what have we done

- **Consequenses of the directive 2001**
- **Group of water-directorates with working groups 2001---**
- **Pilot studies 2003-2004**
- **Typology reports 2003 – 2004**
- **Vann-nett 2004---**
- **Initial characterisation**
 - **Consultants 2004**
 - **County Governors 2005**
- **Norwegian Water regulation 2006**
- **Programs of Measures and Regional plans for selected watercourses and coastal areas 2007-2009**



EU Water Framework Directive-

Most relevant articles and annexes:

- ⌋ Environmental objectives (Art. 4)
- ⌋ Characteristics of river basin districts (Art. 5)
- ⌋ Monitoring (Art. 8)
- ⌋ Programmes of measures (Art. 11)
- ⌋ River basin management plans (Art.13)

and technical details in, mainly:

Contact persons i Norway

Typology/Classification freshwater

- Anne Lyche (als@niva.no) and Ann Katrin Schartau (ann.k.schartau@nina.no)

Typology/Classification coastwater

- Are Pedersen (are.pedersen@niva.no)

HMWB

- Jo Hallvard Halleraker (jhh@dirnat.no)

GIS-Data

- Lars Stalsberg (lst@nve.no)

River Basin Plans

- Kjersti Solvoll (Kjersti.Solvoll@dirnat.no)

Program of Measures/Analysis

/economical aspects

- Jon Lasse Bratli (jlb@klif.no) and Kristin Magnussen (km@sweco.no)

Monitoring

- Jon Lasse Bratli (jlb@klif.no) and Steinar Sandøy (Steinar.Sandoy@DIRNAT.NO)

Characterisation/Monitoring/Measures in Practice – Håvard Hornæs

(Havard.Hornnas@fmos.no) and Helga Gunnarsdottir

(Helga.Gunnarsdottir@fmos.no)





Takk for oppmerksomheten !